



CLEAR COAT REPAIR PROCEDURES





USING THE CLEAR COAT REPAIR PROCEDURES

Use the procedures in this document to rectify the paint defects listed below when they occur in the clearcoat layer. For some defects that can be rectified with more than one possible procedure, choose the procedure based on the severity of the defect.

Paint Defect	Level	Procedure(s)
Cloudy	Level 1	Ghosting / Dieback
	Level 1	Light to Medium Oxidation / Haze / Chalkiness
	Level 2	Medium to Heavy Oxidation / Haze / Chalkiness
Contamination	Level 2	Overspray / Rail Dust / Industrial Fall Out
	Level 3	Minor Scratches / Acid Rain Pitting
	Level 3	Insect Etch / Bird & Bat Droppings
	Level 3	Tree Sap
Dirt: Unidentified	Level 4	Dust Nibs / Excessive Orange Peel
Dry	Level 2	Overspray / Rail Dust / Industrial Fall Out
Holograms	Level 1	New Vehicle Prep / Car Wash Scratch / Holograms
Orange Peel	Level 4	Dust Nibs / Excessive Orange Peel
Overspray	Level 2	Overspray / Rail Dust / Industrial Fall Out
Pigtails	Level 4	Dust Nibs / Excessive Orange Peel
	Level 4	Paint Runs / Paint Sags
Poor Polish	Level 2	Medium to Heavy Oxidation / Haze / Chalkiness
	Level 2	Overspray / Rail Dust / Industrial Fall Out
	Level 3	Minor Scratches / Acid Rain Pitting
	Level 3	Insect Etch / Bird & Bat Droppings
	Level 3	Tree Sap
	Level 4	Dust Nibs / Excessive Orange Peel
	Level 4	Paint Runs / Paint Sags
Run	Level 4	Paint Runs / Paint Sags
Scratch	Level 3	Minor Scratches / Acid Rain Pitting



CONTENTS

Level	Procedure	Page
LEVEL 1	New Vehicle Prep / Car Wash Scratch / Holograms	7
	Swirl Marks / Water Spotting	10
	Ghosting / Dieback	14
	Light To Medium Oxidation / Haze / Chalkiness	18
LEVEL 2	Medium To Heavy Oxidation / Haze / Chalkiness	22
	Overspray / Rail Dust / Industrial Fall Out	27
LEVEL 3	Minor Scratches / Acid Rain Pitting	33
	Insect Etch / Bird & Bat Droppings	39
	Tree Sap	45
LEVEL 4	Dust Nibs / Excessive Orange Peel	51
	Paint Runs / Paint Sags	59



CLEAR COAT REPAIR PROCEDURE GUIDELINES

Follow these guidelines when performing the procedures in this document:

Cleaning

- The first step in any paint finish repair operation is to thoroughly wash the vehicle with hot, soapy water to remove any easy-to-remove contaminants such as dirt or road salt.
- Soap and water washing should be followed by solvent cleaning using the appropriate vehicle clean up chemicals to remove more difficult contaminants such as road tar, tree sap, and waxes.

Sanding

- Sanding with P1500 removes defects such as deep scratches, dust nibs or excessive orange peel.
- Sand with a Dual Action (DA) sander and foam interface pad.
- Sanding through the clear coat requires repainting.
- Follow with the Scratch Refinement Step and/or the Compounding Step.

Scratch Refinement

- Damp sand with 3M™ Trizact™ discs on a Dual Action (DA) sander with a foam interface pad.
- Produces a semi-polished finish.
- Follow with Compounding Step.

Compounding

- Compounding removes imperfections such as medium-coarse scratches, medium oxidation, and stains.
- Use a wool pad for faster and more aggressive cutting.
- Use a foam pad for slower cutting and a finer finish.
- Follow with Polishing Step.

Polishing

- Removes swirls, fine scratches, and very mild stains.
- Any swirls or imperfections remaining after this step will reoccur after waxing products wash or wear off.

Waxing

- Waxing fills swirls, very minor scratches, and imperfections by leaving a thin layer of wax protection.
- Wax does little to further refine paint after the polishing step. After wax is washed or worn away, the imperfections remaining after polishing will reappear.

Polisher / Rotary Buffer

- Never exceed 2000 rpm during clear coat repair.
- Use the specified pad in conjunction with the appropriate finishing chemical.
- Always keep the pad flat against the surface.
- Let the machine do the work – do not use excessive downward force.
- Use overlapping passes to ensure complete coverage.
- Do not buff directly on edges. Mask off edges to reduce the chance of burning edges.
- Do not buff the surface dry. Wet buff, leave residue, and wipe off with a clean detail cloth.
- Keep the cord over your shoulder to reduce the possibility of surface scratching or cord entanglement.

Always begin with the least aggressive method to remove a paint defect and proceed through the steps, in order, from there. Some paint defects may not be able to be removed with paint finishing techniques, and will require refinishing per paint manufacturer's guidelines.



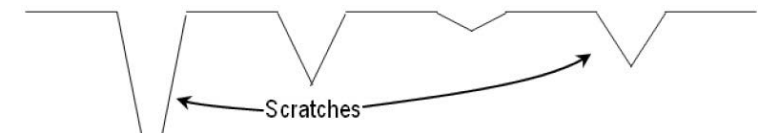
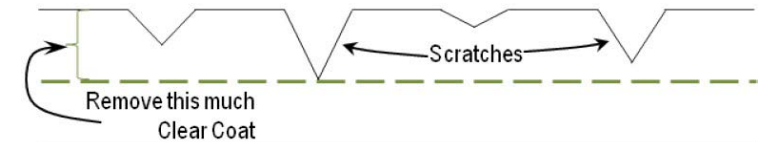
CLEAR COAT DEFECT SEVERITY

Hiding vs. Removing Defects

When polishing and waxing a vehicle, some fine scratches may become less visible or even disappear completely, only to reappear after the vehicle has been washed a few times. By using the correct system of products and procedures, many small paint defects can be removed and will not reappear when the polish and wax are washed and worn away.

To remove a defect from the paint surface, you must remove the very thin layer of clear coat that contains the defect by spending enough time with abrasive, compound, or polish (as required). By removing this thin layer of clear coat, the defect may be actually removed.

Some scratches, acid rain pits, or other more severe defects may not be able to be removed completely. If a defect goes too deep into the clear coat, sanding to the bottom of the defect may result in inadequate clear coat thickness, or may even require a repaint.



Generally speaking, if a scratch can be felt with a fingernail, do not attempt to remove it completely. However, even without sanding, many deep scratches or other more severe defects that are compounded, polished, and waxed will be less noticeable.



Clear Coat Procedures Chart

For each clear coat repair procedure, perform the steps listed below:

Step	Description	Product List	Level 1				Level 2		Level 3		Level 4	
			New Vehicle Preparation Car Wash Scratches Holograms	Swirl Marks Water Spotting	Ghosting/Dieback	Light to Medium Oxidation/Haze/Chalkiness	Medium to Heavy Oxidation/Haze/Chalkiness	Overspray Rail Dust Industrial Fall Out	Minor Scratches Acid Rain Pitting, Inset Etch Bird/Bat Droppings	Tree Sap	Dust Nibs Orange Peel	Paint Runs or Sags
Vehicle Wash	Rinse the vehicle thoroughly to remove any grit that could scratch the paint surface. Wash the vehicle using a clean, soft sponge, towel, or wash mitt. Rinse thoroughly and dry using a clean chamois.*	<ul style="list-style-type: none"> 3M™ Car Wash Soap, PN38377 3M™ Wetordry™ Bucket, PN02513 3M™ Commercial Size Sponge, PN07449 	1	1	1	1	1	1	1	1	1	
Cleaner Clay	Work contaminated areas with the clay using light pressure and 3M™ Car Wash Soap or 3M™ Gloss Enhancer as a lubricant. Knead clay periodically to expose a new surface. Rinse and dry the surface.	<ul style="list-style-type: none"> 3M™ Perfect-It™ III Cleaner Clay, PN38070 3M™ Gloss Enhancer, PN38113 3M™ Car Wash Soap, PN38377 	↓	↓	↓	↓	2	↓	↓	↓	↓	
Initial Defect Removal Texture Match	Sand the repair area with P1500 3M™ Trizact™ Clearcoat Sanding Disc used damp or P1500 3M™ Purple Finishing Film Disc. Remove all paint defects and match the texture to the adjacent OEM panels. Wipe the panel clean.	<ul style="list-style-type: none"> 3M™ Trizact™ Clearcoat Sanding Disc, P1500, PN02088 3M™ Purple Finishing Film Disc, P1500, PN30667 3M™ Hookit™ Soft Interface Pad, PN05777 3M™ Perfect-It™ Denibbing System Kit, PN07653 	↓	↓	↓	↓	↓	↓	↓	2	2+	
Scratch Refinement (P3000)	Refine the P1500 scratches with a DA and a P3000 3M™ Trizact™ Foam Disc used damp with a soft interface pad. Wipe the panel clean.	<ul style="list-style-type: none"> 3M™ Trizact™ Foam Disc, P3000, PN02085 3M™ Hookit™ Soft Interface Pad, PN05777 	↓	↓	↓	↓	↓	↓	↓	3	3	
Scratch Refinement (P5000)	To reduce buffing time, refine the 3000 scratches with a DA and a 5000 grit 3M™ Trizact™ Hookit™ Foam Disc used damp with a 3M™ Hookit™ Soft Interface Pad. Wipe the panel clean.	<ul style="list-style-type: none"> 3M™ Trizact™ Foam Disc, 5000, PN30362 3M™ Hookit™ Soft Interface Pad, PN05777 	↓	↓	↓	↓	↓	2	2	4	4	
Compound	Compound the repair area with a high speed polisher set between 1200 to 2000 rpm. For faster results, use a foam compounding pad and the appropriate rubbing compound. To ensure all scratches have been removed, inspect the surface by spraying it with Inspection Spray and wiping it clean with a yellow microfiber cloth.	<ul style="list-style-type: none"> 3M™ Perfect-It™ EX Rubbing Compound, PN36060 3M™ Perfect-It™ Foam Compounding Pad, PN05706 3M™ Perfect-It™ Low Lint Wool Compound Pad, PN33279 3M™ Quick Release Adaptor, PN05752 3M™ Electric Variable Speed Polisher, PN28391 3M™ Inspection Spray, 1 gallon, PN 06082 	↓	↓	↓	↓	2	3	3	3	5	5
Machine Polish	Polish the repair area with a high speed polisher set between 1200 to 2000 rpm. Use a black foam polishing pad and the appropriate machine polish. Wipe the panel clean with a yellow microfiber cloth.	<ul style="list-style-type: none"> 3M™ Perfect-It™ Machine Polish, PN06064 3M™ Perfect-It™ Foam Polishing Pad, PN05707 3M™ Quick Release Adaptor, PN05752 3M™ Perfect-It™ Detail Cloth, PN06016 	↓	2	2	2	3	4	4	4	6	6
Ultrafine Machine Polish	Polish the repair area with a high speed polisher set between 1200 to 2000 rpm. Use a blue foam polishing pad and Ultrafine Machine Polish. Leave a light film of the polish on the panel and wipe clean with a blue microfiber cloth.	<ul style="list-style-type: none"> 3M™ Perfect-It™ Ultrafine Machine Polish, PN06068 3M™ Perfect-It™ Ultrafine Foam Polishing Pad, PN05708 3M™ Quick Release Adaptor, PN05752 3M™ Perfect-It™ Detail Cloth, PN06020 	2	3	3	3	4	5	5	5	7	7
Final Detail	Remove any masking material from the repair area and clean any residual sling from the adjacent panels and door jamb areas. Cleaning the panel immediately after compounding and polishing will greatly improve the ease of cleaning. Inspect the surface using the 3M™ PPS™ SUN GUN™ II.	<ul style="list-style-type: none"> 3M™ Perfect-It™ Detail Cloth, PN06020 3M™ Perfect-It™ Clean and Shine, PN06084 3M™ PPS™ SUN GUN™ II Light Kit, PN 16550 	3	4	4	4	5	6	6	6	8	8

NOTES:

Always begin with the least aggressive method to remove a paint defect, and proceed through the steps from there.
Some paint defects may not be able to be repaired with paint finishing techniques, and will require refinishing per paint manufacturer's recommendations.

* After the Vehicle Wash step, use an appropriate vehicle clean-up chemical to remove tree sap before proceeding to Scratch Refinement (P5000)
+ To remove paint runs/sags, hand sand the area with P1500 on a hard and rigid backer plate (or sanding stone) to prevent undercutting



NEW VEHICLE PREPARATION / CAR WASH SCRATCHES / HOLOGRAMS

1 Vehicle Wash

Perform the complete Vehicle Wash procedure.



Product List

- 3M™ Heavy Duty Wheel Cleaner, 1 gallon, PN 38374
- 3M™ All Purpose Cleaner and Degreaser Concentrate, 1 gallon, PN 38350
- 3M™ Detailing Spray Bottle, 32 fl. oz., PN 37716
- 3M™ Solvent Spray Trigger Nozzle Head, PN 37718
- 3M™ Car Wash Soap Concentrate, 1 gallon, PN 38377
- 3M™ Wetordry™ Bucket, PN02513
- 3M™ Commercial Size Sponge, PN07449
- 3M™ Silicone Free Tire Dressing, 1 gallon, PN 38327





NEW VEHICLE PREPARATION / CAR WASH SCRATCHES / HOLOGRAMS

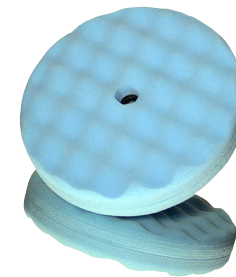
2 Ultrafine Machine Polish

Polish the repair area with a high speed polisher set between 1200 to 2000 rpm. Use a blue foam polishing pad and Ultrafine Machine Polish. Leave a light film of the polish on the panel and wipe clean with a blue microfiber cloth.



Product List

- 3M™ Perfect-It™ Ultrafine Machine Polish, PN06068
- 3M™ Perfect-It™ Ultrafine Foam Polishing Pad, PN05708
- 3M™ Quick Release Adaptor, PN05752
- 3M™ Perfect-It™ Detail Cloth, PN06020





NEW VEHICLE PREPARATION / CAR WASH SCRATCHES / HOLOGRAMS

3 Final Detail

Remove any masking material from the repair area and clean any residual sling from adjacent panels and door jamb areas. Cleaning the panel immediately after compounding and polishing will greatly improve the ease of cleaning. Inspect the surface using the 3M™ PPS™ SUN GUN™ II.



Product List

- 3M™ Perfect-It™ Detail Cloth, PN06020
- 3M™ Perfect-It™ Clean and Shine, PN06084
- 3M™ PPS™ SUN GUN™ II Light Kit, PN 16550





SWIRL MARKS / WATER SPOTTING

1

Vehicle Wash

Perform the complete Vehicle Wash procedure.



Product List

- 3M™ Heavy Duty Wheel Cleaner, 1 gallon, PN 38374
- 3M™ All Purpose Cleaner and Degreaser Concentrate, 1 gallon, PN 38350
- 3M™ Detailing Spray Bottle, 32 fl. oz., PN 37716
- 3M™ Solvent Spray Trigger Nozzle Head, PN 37718
- 3M™ Car Wash Soap Concentrate, 1 gallon, PN 38377
- 3M™ Wetordry™ Bucket, PN02513
- 3M™ Commercial Size Sponge, PN07449
- 3M™ Silicone Free Tire Dressing, 1 gallon, PN 38327





SWIRL MARKS / WATER SPOTTING

2 Machine Polish

Polish the repair area with a high speed polisher set between 1200 to 2000 rpm. Use a black foam polishing pad and the appropriate machine polish. Wipe the panel clean with a yellow microfiber cloth.



Product List

- 3M™ Perfect-It™ Machine Polish, PN06064
- 3M™ Perfect-It™ Foam Polishing Pad, PN05707
- 3M™ Quick Release Adaptor, PN05752
- 3M™ Perfect-It™ Detail Cloth, PN06016





SWIRL MARKS / WATER SPOTTING

3

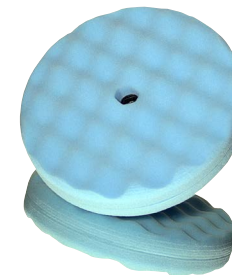
Ultrafine Machine Polish

Polish the repair area with a high speed polisher set between 1200 to 2000 rpm. Use a blue foam polishing pad and ultrafine machine polish. Leave a light film of the polish on the panel and wipe clean with a blue microfiber cloth.



Product List

- 3M™ Perfect-It™ Ultrafine Machine Polish, PN06068
- 3M™ Perfect-It™ Ultrafine Foam Polishing Pad, PN05708
- 3M™ Quick Release Adaptor, PN05752
- 3M™ Perfect-It™ Detail Cloth, PN06020





SWIRL MARKS / WATER SPOTTING

4 Final Detail

Remove any masking material from the repair area and clean any residual sling from adjacent panels and door jamb areas. Cleaning the panel immediately after compounding and polishing will greatly improve the ease of cleaning. Inspect the surface using the 3M™ PPS™ SUN GUN™ II.



Product List

- 3M™ Perfect-It™ Detail Cloth, PN06020
- 3M™ Perfect-It™ Clean and Shine, PN06084
- 3M™ PPS™ SUN GUN™ II Light Kit, PN 16550





GHOSTING / DIEBACK

1 Vehicle Wash

Perform the complete Vehicle Wash procedure.



Product List

- 3M™ Heavy Duty Wheel Cleaner, 1 gallon, PN 38374
- 3M™ All Purpose Cleaner and Degreaser Concentrate, 1 gallon, PN 38350
- 3M™ Detailing Spray Bottle, 32 fl. oz., PN 37716
- 3M™ Solvent Spray Trigger Nozzle Head, PN 37718
- 3M™ Car Wash Soap Concentrate, 1 gallon, PN 38377
- 3M™ Wetordry™ Bucket, PN02513
- 3M™ Commercial Size Sponge, PN07449
- 3M™ Silicone Free Tire Dressing, 1 gallon, PN 38327





GHOSTING / DIEBACK

2 Machine Polish

Polish the repair area with a high speed polisher set between 1200 to 2000 rpm. Use a black foam polishing pad and the appropriate machine polish. Wipe the panel clean with a yellow microfiber cloth.



Product List

- 3M™ Perfect-It™ Machine Polish, PN06064
- 3M™ Perfect-It™ Foam Polishing Pad, PN05707
- 3M™ Quick Release Adaptor, PN05752
- 3M™ Perfect-It™ Detail Cloth, PN06016





GHOSTING / DIEBACK

3

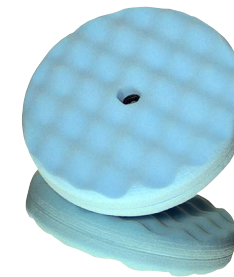
Ultrafine Machine Polish

Polish the repair area with a high speed polisher set between 1200 to 2000 rpm. Use a blue foam polishing pad and ultrafine machine polish. Leave a light film of the polish on the panel and wipe clean with a blue microfiber cloth.



Product List

- 3M™ Perfect-It™ Ultrafine Machine Polish, PN06068
- 3M™ Perfect-It™ Ultrafine Foam Polishing Pad, PN05708
- 3M™ Quick Release Adaptor, PN05752
- 3M™ Perfect-It™ Detail Cloth, PN06020





GHOSTING / DIEBACK

4 Final Detail

Remove any masking material from the repair area and clean any residual sling from adjacent panels and door jamb areas. Cleaning the panel immediately after compounding and polishing will greatly improve the ease of cleaning. Inspect the surface using the 3M™ PPS™ SUN GUN™ II.



Product List

- 3M™ Perfect-It™ Detail Cloth, PN06020
- 3M™ Perfect-It™ Clean and Shine, PN06084
- 3M™ PPS™ SUN GUN™ II Light Kit, PN 16550





LIGHT TO MEDIUM OXIDATION / HAZE / CHALKINESS

1

Vehicle Wash

Perform the complete Vehicle Wash procedure.



Product List

- 3M™ Heavy Duty Wheel Cleaner, 1 gallon, PN 38374
- 3M™ All Purpose Cleaner and Degreaser Concentrate, 1 gallon, PN 38350
- 3M™ Detailing Spray Bottle, 32 fl. oz., PN 37716
- 3M™ Solvent Spray Trigger Nozzle Head, PN 37718
- 3M™ Car Wash Soap Concentrate, 1 gallon, PN 38377
- 3M™ Wetordry™ Bucket, PN02513
- 3M™ Commercial Size Sponge, PN07449
- 3M™ Silicone Free Tire Dressing, 1 gallon, PN 38327





LIGHT TO MEDIUM OXIDATION / HAZE / CHALKINESS

2 Machine Polish

Polish the repair area with a high speed polisher set between 1200 to 2000 rpm. Use a black foam polishing pad and the appropriate machine polish. Wipe the panel clean with a yellow microfiber cloth.



Product List

- 3M™ Perfect-It™ Machine Polish, PN06064
- 3M™ Perfect-It™ Foam Polishing Pad, PN05707
- 3M™ Quick Release Adaptor, PN05752
- 3M™ Perfect-It™ Detail Cloth, PN06016





LIGHT TO MEDIUM OXIDATION / HAZE / CHALKINESS

3

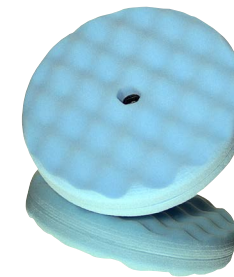
Ultrafine Machine Polish

Polish the repair area with a high speed polisher set between 1200 to 2000 rpm. Use a blue foam polishing pad and ultrafine machine polish. Leave a light film of the polish on the panel and wipe clean with a blue microfiber cloth.



Product List

- 3M™ Perfect-It™ Ultrafine Machine Polish, PN06068
- 3M™ Perfect-It™ Ultrafine Foam Polishing Pad, PN05708
- 3M™ Quick Release Adaptor, PN05752
- 3M™ Perfect-It™ Detail Cloth, PN06020





LIGHT TO MEDIUM OXIDATION / HAZE / CHALKINESS

4 Final Detail

Remove any masking material from the repair area and clean any residual sling from adjacent panels and door jamb areas. Cleaning the panel immediately after compounding and polishing will greatly improve the ease of cleaning. Inspect the surface using the 3M™ PPS™ SUN GUN™ II.



Product List

- 3M™ Perfect-It™ Detail Cloth, PN06020
- 3M™ Perfect-It™ Clean and Shine, PN06084
- 3M™ PPS™ SUN GUN™ II Light Kit, PN 16550





MEDIUM TO HEAVY OXIDATION / HAZE / CHALKINESS

1 Vehicle Wash

Perform the complete Vehicle Wash procedure.



Product List

- 3M™ Heavy Duty Wheel Cleaner, 1 gallon, PN 38374
- 3M™ All Purpose Cleaner and Degreaser Concentrate, 1 gallon, PN 38350
- 3M™ Detailing Spray Bottle, 32 fl. oz., PN 37716
- 3M™ Solvent Spray Trigger Nozzle Head, PN 37718
- 3M™ Car Wash Soap Concentrate, 1 gallon, PN 38377
- 3M™ Wetordry™ Bucket, PN02513
- 3M™ Commercial Size Sponge, PN07449
- 3M™ Silicone Free Tire Dressing, 1 gallon, PN 38327





MEDIUM TO HEAVY OXIDATION / HAZE / CHALKINESS

2 Compound

Compound the repair area with a high speed polisher set between 1200 to 2000 RPM. For faster results, use a foam compounding pad and the appropriate rubbing compound. To ensure all scratches have been removed, inspect the surface by spraying it with Inspection Spray and wiping it clean with a yellow microfiber cloth.



Product List

- 3M™ Perfect-It™ EX Rubbing Compound, 1 qt. (946mL), PN 36060
- 3M™ Perfect-It™ Foam Compounding Pad, Double Sided, Quick Connect, 9 in., PN 05706
- 3M™ Perfect-It™ Low Linting 100% Wool Compound Pad, Double Sided, Quick Connect, PN 33279
- 3M™ Quick Connect Adaptor, 5/8 in. Thread, PN 05752
- 3M™ Electric Variable Speed Polisher, PN 28391
- 3M™ Inspection Spray, 1 gallon, PN 06082





MEDIUM TO HEAVY OXIDATION / HAZE / CHALKINESS

3 Machine Polish

Polish the repair area with a high speed polisher set between 1200 to 2000 rpm. Use a black foam polishing pad and the appropriate machine polish. Wipe the panel clean with a yellow microfiber cloth.



Product List

- 3M™ Perfect-It™ Machine Polish, PN06064
- 3M™ Perfect-It™ Foam Polishing Pad, PN05707
- 3M™ Quick Release Adaptor, PN05752
- 3M™ Perfect-It™ Detail Cloth, PN06016





MEDIUM TO HEAVY OXIDATION / HAZE / CHALKINESS

4

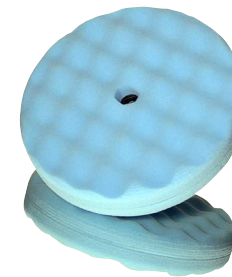
Ultrafine Machine Polish

Polish the repair area with a high speed polisher set between 1200 to 2000 rpm. Use a blue foam polishing pad and ultrafine machine polish. Leave a light film of the polish on the panel and wipe clean with a blue microfiber cloth.



Product List

- 3M™ Perfect-It™ Ultrafine Machine Polish, PN06068
- 3M™ Perfect-It™ Ultrafine Foam Polishing Pad, PN05708
- 3M™ Quick Release Adaptor, PN05752
- 3M™ Perfect-It™ Detail Cloth, PN06020





MEDIUM TO HEAVY OXIDATION / HAZE / CHALKINESS

5

Final Detail

Remove any masking material from the repair area and clean any residual sling from adjacent panels and door jamb areas. Cleaning the panel immediately after compounding and polishing will greatly improve the ease of cleaning. Inspect the surface using the 3M™ PPS™ SUN GUN™ II.



Product List

- 3M™ Perfect-It™ Detail Cloth, PN06020
- 3M™ Perfect-It™ Clean and Shine, PN06084
- 3M™ PPS™ SUN GUN™ II Light Kit, PN 16550





OVERSPRAY / RAIL DUST / INDUSTRIAL FALL OUT

1

Vehicle Wash

Perform the complete Vehicle Wash procedure.



Product List

- 3M™ Heavy Duty Wheel Cleaner, 1 gallon, PN 38374
- 3M™ All Purpose Cleaner and Degreaser Concentrate, 1 gallon, PN 38350
- 3M™ Detailing Spray Bottle, 32 fl. oz., PN 37716
- 3M™ Solvent Spray Trigger Nozzle Head, PN 37718
- 3M™ Car Wash Soap Concentrate, 1 gallon, PN 38377
- 3M™ Wetordry™ Bucket, PN02513
- 3M™ Commercial Size Sponge, PN07449
- 3M™ Silicone Free Tire Dressing, 1 gallon, PN 38327





OVERSPRAY / RAIL DUST / INDUSTRIAL FALL OUT

2 Cleaner Clay

Work contaminated areas with the clay using light pressure and 3M™ Car Wash Soap or 3M™ Gloss Enhancer as a lubricant. Knead clay periodically to expose a new surface. Rinse and dry surface.



Product List

- 3M™ Perfect-It™ III Cleaner Clay, PN38070
- 3M™ Gloss Enhancer, PN38113
- 3M™ Car Wash Soap, PN38377





OVERSPRAY / RAIL DUST / INDUSTRIAL FALL OUT

3 Compound

Compound the repair area with a high speed polisher set between 1200 to 2000 RPM. For faster results, use a foam compounding pad and the appropriate rubbing compound. To ensure all scratches have been removed, inspect the surface by spraying it with Inspection Spray and wiping it clean with a yellow microfiber cloth.



Product List

- 3M™ Perfect-It™ EX Rubbing Compound, 1 qt. (946mL), PN 36060
- 3M™ Perfect-It™ Foam Compounding Pad, Double Sided, Quick Connect, 9 in., PN 05706
- 3M™ Perfect-It™ Low Linting 100% Wool Compound Pad, Double Sided, Quick Connect, PN 33279
- 3M™ Quick Connect Adaptor, 5/8 in. Thread, PN 05752
- 3M™ Electric Variable Speed Polisher, PN 28391
- 3M™ Inspection Spray, 1 gallon, PN 06082





OVERSPRAY / RAIL DUST / INDUSTRIAL FALL OUT

4 Machine Polish

Polish the repair area with a high speed polisher set between 1200 to 2000 rpm. Use a black foam polishing pad and the appropriate machine polish. Wipe the panel clean with a yellow microfiber cloth.



Product List

- 3M™ Perfect-It™ Machine Polish, PN06064
- 3M™ Perfect-It™ Foam Polishing Pad, PN05707
- 3M™ Quick Release Adaptor, PN05752
- 3M™ Perfect-It™ Detail Cloth, PN06016





OVERSPRAY / RAIL DUST / INDUSTRIAL FALL OUT

5

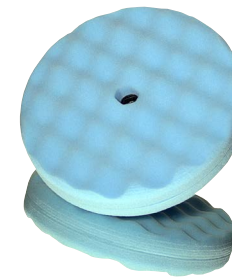
Ultrafine Machine Polish

Polish the repair area with a high speed polisher set between 1200 to 2000 rpm. Use a blue foam polishing pad and ultrafine machine polish. Leave a light film of the polish on the panel and wipe clean with a blue microfiber cloth.



Product List

- 3M™ Perfect-It™ Ultrafine Machine Polish, PN06068
- 3M™ Perfect-It™ Ultrafine Foam Polishing Pad, PN05708
- 3M™ Quick Release Adaptor, PN05752
- 3M™ Perfect-It™ Detail Cloth, PN06020





OVERSPRAY / RAIL DUST / INDUSTRIAL FALL OUT

6 Final Detail

Remove any masking material from the repair area and clean any residual sling from adjacent panels and door jamb areas. Cleaning the panel immediately after compounding and polishing will greatly improve the ease of cleaning. Inspect the surface using the 3M™ PPS™ SUN GUN™ II.



Product List

- 3M™ Perfect-It™ Detail Cloth, PN06020
- 3M™ Perfect-It™ Clean and Shine, PN06084
- 3M™ PPS™ SUN GUN™ II Light Kit, PN 16550





MINOR SCRATCHES / ACID RAIN PITTING

1 Vehicle Wash

Perform the complete Vehicle Wash procedure.



Product List

- 3M™ Heavy Duty Wheel Cleaner, 1 gallon, PN 38374
- 3M™ All Purpose Cleaner and Degreaser Concentrate, 1 gallon, PN 38350
- 3M™ Detailing Spray Bottle, 32 fl. oz., PN 37716
- 3M™ Solvent Spray Trigger Nozzle Head, PN 37718
- 3M™ Car Wash Soap Concentrate, 1 gallon, PN 38377
- 3M™ Wetordry™ Bucket, PN02513
- 3M™ Commercial Size Sponge, PN07449
- 3M™ Silicone Free Tire Dressing, 1 gallon, PN 38327





MINOR SCRATCHES / ACID RAIN PITTING

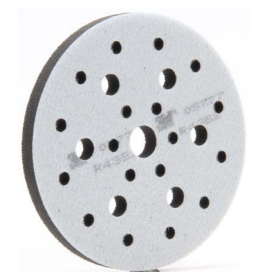
2 Scratch Refinement (5000)

Dual Action (DA) sand the area with a 5000 Trizact™ Foam Disc used damp with a soft interface pad. Wipe the panel clean.



Product List

- 3M™ Trizact™ Foam Disc, 5000, PN30362
- 3M™ Hookit™ Soft Interface Pad, PN05777





MINOR SCRATCHES / ACID RAIN PITTING

3 Compound

Compound the repair area with a high speed polisher set between 1200 to 2000 RPM. For faster results, use a foam compounding pad and the appropriate rubbing compound. To ensure all scratches have been removed, inspect the surface by spraying it with Inspection Spray and wiping it clean with a yellow microfiber cloth.



Product List

- 3M™ Perfect-It™ EX Rubbing Compound, 1 qt. (946mL), PN 36060
- 3M™ Perfect-It™ Foam Compounding Pad, Double Sided, Quick Connect, 9 in., PN 05706
- 3M™ Perfect-It™ Low Linting 100% Wool Compound Pad, Double Sided, Quick Connect, PN 33279
- 3M™ Quick Connect Adaptor, 5/8 in. Thread, PN 05752
- 3M™ Electric Variable Speed Polisher, PN 28391
- 3M™ Inspection Spray, 1 gallon, PN 06082





MINOR SCRATCHES / ACID RAIN PITTING

4 Machine Polish

Polish the repair area with a high speed polisher set between 1200 to 2000 rpm. Use a black foam polishing pad and the appropriate machine polish. Wipe the panel clean with a yellow microfiber cloth.



Product List

- 3M™ Perfect-It™ Machine Polish, PN06064
- 3M™ Perfect-It™ Foam Polishing Pad, PN05707
- 3M™ Quick Release Adaptor, PN05752
- 3M™ Perfect-It™ Detail Cloth, PN06016





MINOR SCRATCHES / ACID RAIN PITTING

5

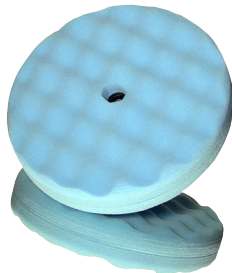
Ultrafine Machine Polish

Polish the repair area with a high speed polisher set between 1200 to 2000 rpm. Use a blue foam polishing pad and ultrafine machine polish. Leave a light film of the polish on the panel and wipe clean with a blue microfiber cloth.



Product List

- 3M™ Perfect-It™ Ultrafine Machine Polish, PN06068
- 3M™ Perfect-It™ Ultrafine Foam Polishing Pad, PN05708
- 3M™ Quick Release Adaptor, PN05752
- 3M™ Perfect-It™ Detail Cloth, PN06020





MINOR SCRATCHES / ACID RAIN PITTING

6

Final Detail

Remove any masking material from the repair area and clean any residual sling from adjacent panels and door jamb areas. Cleaning the panel immediately after compounding and polishing will greatly improve the ease of cleaning. Inspect the surface using the 3M™ PPS™ SUN GUN™ II.



Product List

- 3M™ Perfect-It™ Detail Cloth, PN06020
- 3M™ Perfect-It™ Clean and Shine, PN06084
- 3M™ PPS™ SUN GUN™ II Light Kit, PN 16550





INSECT ETCH / BIRD & BAT DROPPINGS

1 Vehicle Wash

Perform the complete Vehicle Wash procedure.



Product List

- 3M™ Heavy Duty Wheel Cleaner, 1 gallon, PN 38374
- 3M™ All Purpose Cleaner and Degreaser Concentrate, 1 gallon, PN 38350
- 3M™ Detailing Spray Bottle, 32 fl. oz., PN 37716
- 3M™ Solvent Spray Trigger Nozzle Head, PN 37718
- 3M™ Car Wash Soap Concentrate, 1 gallon, PN 38377
- 3M™ Wetordry™ Bucket, PN02513
- 3M™ Commercial Size Sponge, PN07449
- 3M™ Silicone Free Tire Dressing, 1 gallon, PN 38327





INSECT ETCH / BIRD & BAT DROPPINGS

2 Scratch Refinement (5000)

Dual Action (DA) sand the area with a 5000 Trizact™ Foam Disc used damp with a soft interface pad. Wipe the panel clean.



Product List

- 3M™ Trizact™ Foam Disc, 5000, PN30362
- 3M™ Hookit™ Soft Interface Pad, PN05777





INSECT ETCH / BIRD & BAT DROPPINGS

3 Compound

Compound the repair area with a high speed polisher set between 1200 to 2000 RPM. For faster results, use a foam compounding pad and the appropriate rubbing compound. To ensure all scratches have been removed, inspect the surface by spraying it with Inspection Spray and wiping it clean with a yellow microfiber cloth.



Product List

- 3M™ Perfect-It™ EX Rubbing Compound, 1 qt. (946mL), PN 36060
- 3M™ Perfect-It™ Foam Compounding Pad, Double Sided, Quick Connect, 9 in., PN 05706
- 3M™ Perfect-It™ Low Linting 100% Wool Compound Pad, Double Sided, Quick Connect, PN 33279
- 3M™ Quick Connect Adaptor, 5/8 in. Thread, PN 05752
- 3M™ Electric Variable Speed Polisher, PN 28391
- 3M™ Inspection Spray, 1 gallon, PN 06082





INSECT ETCH / BIRD & BAT DROPPINGS

4 Machine Polish

Polish the repair area with a high speed polisher set between 1200 to 2000 rpm. Use a black foam polishing pad and the appropriate machine polish. Wipe the panel clean with a yellow microfiber cloth.



Product List

- 3M™ Perfect-It™ Machine Polish, PN06064
- 3M™ Perfect-It™ Foam Polishing Pad, PN05707
- 3M™ Quick Release Adaptor, PN05752
- 3M™ Perfect-It™ Detail Cloth, PN06016





INSECT ETCH / BIRD & BAT DROPPINGS

5

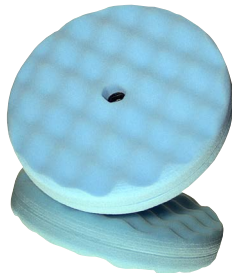
Ultrafine Machine Polish

Polish the repair area with a high speed polisher set between 1200 to 2000 rpm. Use a blue foam polishing pad and ultrafine machine polish. Leave a light film of the polish on the panel and wipe clean with a blue microfiber cloth.



Product List

- 3M™ Perfect-It™ Ultrafine Machine Polish, PN06068
- 3M™ Perfect-It™ Ultrafine Foam Polishing Pad, PN05708
- 3M™ Quick Release Adaptor, PN05752
- 3M™ Perfect-It™ Detail Cloth, PN06020





INSECT ETCH / BIRD & BAT DROPPINGS

6 Final Detail

Remove any masking material from the repair area and clean any residual sling from adjacent panels and door jamb areas. Cleaning the panel immediately after compounding and polishing will greatly improve the ease of cleaning. Inspect the surface using the 3M™ PPS™ SUN GUN™ II.



Product List

- 3M™ Perfect-It™ Detail Cloth, PN06020
- 3M™ Perfect-It™ Clean and Shine, PN06084
- 3M™ PPS™ SUN GUN™ II Light Kit, PN 16550





TREE SAP

1 Vehicle Wash

Perform the complete Vehicle Wash procedure.



Product List

- 3M™ Heavy Duty Wheel Cleaner, 1 gallon, PN 38374
- 3M™ All Purpose Cleaner and Degreaser Concentrate, 1 gallon, PN 38350
- 3M™ Detailing Spray Bottle, 32 fl. oz., PN 37716
- 3M™ Solvent Spray Trigger Nozzle Head, PN 37718
- 3M™ Car Wash Soap Concentrate, 1 gallon, PN 38377
- 3M™ Wetordry™ Bucket, PN02513
- 3M™ Commercial Size Sponge, PN07449
- 3M™ Silicone Free Tire Dressing, 1 gallon, PN 38327





TREE SAP

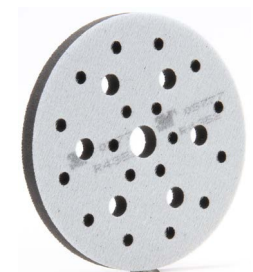
2 Scratch Refinement (5000)

Dual Action (DA) sand the area with a 5000 Trizact™ Foam Disc used damp with a soft interface pad. Wipe the panel clean.



Product List

- 3M™ Trizact™ Foam Disc, 5000, PN30362
- 3M™ Hookit™ Soft Interface Pad, PN05777





TREE SAP

3 Compound

Compound the repair area with a high speed polisher set between 1200 to 2000 RPM. For faster results, use a foam compounding pad and the appropriate rubbing compound. To ensure all scratches have been removed, inspect the surface by spraying it with Inspection Spray and wiping it clean with a yellow microfiber cloth.



Product List

- 3M™ Perfect-It™ EX Rubbing Compound, 1 qt. (946mL), PN 36060
- 3M™ Perfect-It™ Foam Compounding Pad, Double Sided, Quick Connect, 9 in., PN 05706
- 3M™ Perfect-It™ Low Linting 100% Wool Compound Pad, Double Sided, Quick Connect, PN 33279
- 3M™ Quick Connect Adaptor, 5/8 in. Thread, PN 05752
- 3M™ Electric Variable Speed Polisher, PN 28391
- 3M™ Inspection Spray, 1 gallon, PN 06082





TREE SAP

4 Machine Polish

Polish the repair area with a high speed polisher set between 1200 to 2000 rpm. Use a black foam polishing pad and the appropriate machine polish. Wipe the panel clean with a yellow microfiber cloth.



Product List

- 3M™ Perfect-It™ Machine Polish, PN06064
- 3M™ Perfect-It™ Foam Polishing Pad, PN05707
- 3M™ Quick Release Adaptor, PN05752
- 3M™ Perfect-It™ Detail Cloth, PN06016





TREE SAP

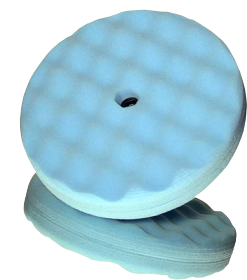
5 Ultrafine Machine Polish

Polish the repair area with a high speed polisher set between 1200 to 2000 rpm. Use a blue foam polishing pad and ultrafine machine polish. Leave a light film of the polish on the panel and wipe clean with a blue microfiber cloth.



Product List

- 3M™ Perfect-It™ Ultrafine Machine Polish, PN06068
- 3M™ Perfect-It™ Ultrafine Foam Polishing Pad, PN05708
- 3M™ Quick Release Adaptor, PN05752
- 3M™ Perfect-It™ Detail Cloth, PN06020





TREE SAP

6 Final Detail

Remove any masking material from the repair area and clean any residual sling from adjacent panels and door jamb areas. Cleaning the panel immediately after compounding and polishing will greatly improve the ease of cleaning. Inspect the surface using the 3M™ PPS™ SUN GUN™ II.



Product List

- 3M™ Perfect-It™ Detail Cloth, PN06020
- 3M™ Perfect-It™ Clean and Shine, PN06084
- 3M™ PPS™ SUN GUN™ II Light Kit, PN 16550





DUST NIBS / EXCESSIVE ORANGE PEEL

1 Vehicle Wash

Perform the complete Vehicle Wash procedure.



Product List

- 3M™ Heavy Duty Wheel Cleaner, 1 gallon, PN 38374
- 3M™ All Purpose Cleaner and Degreaser Concentrate, 1 gallon, PN 38350
- 3M™ Detailing Spray Bottle, 32 fl. oz., PN 37716
- 3M™ Solvent Spray Trigger Nozzle Head, PN 37718
- 3M™ Car Wash Soap Concentrate, 1 gallon, PN 38377
- 3M™ Wetordry™ Bucket, PN02513
- 3M™ Commercial Size Sponge, PN07449
- 3M™ Silicone Free Tire Dressing, 1 gallon, PN 38327





DUST NIBS / EXCESSIVE ORANGE PEEL

2 Initial Defect Removal Texture Match

Sand the repair area with P1500 3M™ Trizact™ Clearcoat Sanding Disc used damp or P1500 3M™ Purple Finishing Film Disc. Remove all paint defects and match texture to adjacent OEM panels. Wipe the panel clean.



Product List

- 3M™ Trizact™ Clearcoat Sanding Disc, P1500, PN02088
- 3M™ Purple Finishing Film Disc, P1500, PN30667
- 3M™ Hookit™ Soft Interface Pad, PN05777
- 3M™ Perfect-It™ Denibbing System Kit, PN07653





DUST NIBS / EXCESSIVE ORANGE PEEL

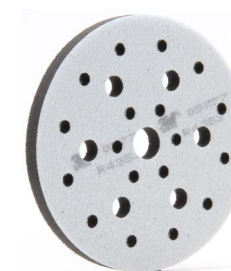
3 Scratch Refinement (P3000)

Refine the P1500 scratches with a DA and a P3000 3M™ Trizact™ Foam Disc used damp with a soft interface pad. Wipe the panel clean.



Product List

- 3M™ Trizact™ Foam Disc, P3000, PN02085
- 3M™ Hookit™ Soft Interface Pad, PN05777





DUST NIBS / EXCESSIVE ORANGE PEEL

4

Scratch Refinement 5000 (Optional)

To reduce buffing time, refine the 3000 scratches with a DA and a 5000 grit 3M™ Trizact™ Hookit™ Foam Disc used damp with a 3M™ Hookit™ Soft Interface Pad. Wipe the panel clean.



CAUTION

3000 must be used prior to 5000.



Product List

- 3M™ Trizact™ Foam Disc, 5000, PN30362
- 3M™ Hookit™ Soft Interface Pad, PN05777





DUST NIBS / EXCESSIVE ORANGE PEEL

5

Compound

Compound the repair area with a high speed polisher set between 1200 to 2000 RPM. For faster results, use a foam compounding pad and the appropriate rubbing compound. To ensure all scratches have been removed, inspect the surface by spraying it with Inspection Spray and wiping it clean with a yellow microfiber cloth.



Product List

- 3M™ Perfect-It™ EX Rubbing Compound, 1 qt. (946mL), PN 36060
- 3M™ Perfect-It™ Foam Compounding Pad, Double Sided, Quick Connect, 9 in., PN 05706
- 3M™ Perfect-It™ Low Linting 100% Wool Compound Pad, Double Sided, Quick Connect, PN 33279
- 3M™ Quick Connect Adaptor, 5/8 in. Thread, PN 05752
- 3M™ Electric Variable Speed Polisher, PN 28391
- 3M™ Inspection Spray, 1 gallon, PN 06082





DUST NIBS / EXCESSIVE ORANGE PEEL

6 Machine Polish

Polish the repair area with a high speed polisher set between 1200 to 2000 rpm. Use a black foam polishing pad and the appropriate machine polish. Wipe the panel clean with a yellow microfiber cloth.



Product List

- 3M™ Perfect-It™ Machine Polish, PN06064
- 3M™ Perfect-It™ Foam Polishing Pad, PN05707
- 3M™ Quick Release Adaptor, PN05752
- 3M™ Perfect-It™ Detail Cloth, PN06016





DUST NIBS / EXCESSIVE ORANGE PEEL

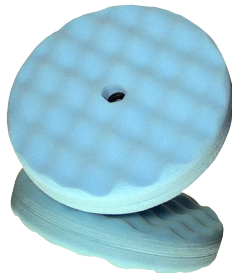
7 Ultrafine Machine Polish

Polish the repair area with a high speed polisher set between 1200 to 2000 rpm. Use a blue foam polishing pad and ultrafine machine polish. Leave a light film of the polish on the panel and wipe clean with a blue microfiber cloth.



Product List

- 3M™ Perfect-It™ Ultrafine Machine Polish, PN06068
- 3M™ Perfect-It™ Ultrafine Foam Polishing Pad, PN05708
- 3M™ Quick Release Adaptor, PN05752
- 3M™ Perfect-It™ Detail Cloth, PN06020





DUST NIBS / EXCESSIVE ORANGE PEEL

8

Final Detail

Remove any masking material from the repair area and clean any residual sling from adjacent panels and door jamb areas. Cleaning the panel immediately after compounding and polishing will greatly improve the ease of cleaning. Inspect the surface using the 3M™ PPS™ SUN GUN™ II.



Product List

- 3M™ Perfect-It™ Detail Cloth, PN06020
- 3M™ Perfect-It™ Clean and Shine, PN06084
- 3M™ PPS™ SUN GUN™ II Light Kit, PN 16550





PAINT RUNS / PAINT SAGS

1 Vehicle Wash

Perform the complete Vehicle Wash procedure.



Product List

- 3M™ Heavy Duty Wheel Cleaner, 1 gallon, PN 38374
- 3M™ All Purpose Cleaner and Degreaser Concentrate, 1 gallon, PN 38350
- 3M™ Detailing Spray Bottle, 32 fl. oz., PN 37716
- 3M™ Solvent Spray Trigger Nozzle Head, PN 37718
- 3M™ Car Wash Soap Concentrate, 1 gallon, PN 38377
- 3M™ Wetordry™ Bucket, PN02513
- 3M™ Commercial Size Sponge, PN07449
- 3M™ Silicone Free Tire Dressing, 1 gallon, PN 38327





PAINT RUNS / PAINT SAGS

2 Block Sand

To remove paint runs/sags, hand or block sand the area with P1500 on a hard/rigid block to prevent undercutting around the defect.



Product List

- 3M™ Purple Finishing Film Disc, P1500, PN30667





PAINT RUNS / PAINT SAGS

3 Initial Defect Removal Texture Match

Sand the repair area with P1500 3M™ Trizact™ Clearcoat Sanding Disc used damp or P1500 3M™ Purple Finishing Film Disc. Remove all paint defects and match texture to adjacent OEM panels. Wipe the panel clean.



Product List

- 3M™ Trizact™ Clearcoat Sanding Disc, P1500, PN02088
- 3M™ Purple Finishing Film Disc, P1500, PN30667
- 3M™ Hookit™ Soft Interface Pad, PN05777
- 3M™ Perfect-It™ Denibbing System Kit, PN07653





PAINT RUNS / PAINT SAGS

4

Scratch Refinement (P3000)

Refine the P1500 scratches with a DA and a P3000 3M™ Trizact™ Foam Disc used damp with a soft interface pad. Wipe the panel clean.



Product List

- 3M™ Trizact™ Foam Disc, P3000, PN02085
- 3M™ Hookit™ Soft Interface Pad, PN05777





PAINT RUNS / PAINT SAGS

5

Scratch Refinement 5000 (Optional)

To reduce buffing time, refine the 3000 scratches with a DA and a 5000 grit 3M™ Trizact™ Hookit™ Foam Disc used damp with a 3M™ Hookit™ Soft Interface Pad. Wipe the panel clean.



CAUTION

3000 must be used prior to 5000.



Product List

- 3M™ Trizact™ Foam Disc, 5000, PN30362
- 3M™ Hookit™ Soft Interface Pad, PN05777





PAINT RUNS / PAINT SAGS

6 Compound

Compound the repair area with a high speed polisher set between 1200 to 2000 RPM. For faster results, use a foam compounding pad and the appropriate rubbing compound. To ensure all scratches have been removed, inspect the surface by spraying it with Inspection Spray and wiping it clean with a yellow microfiber cloth.



Product List

- 3M™ Perfect-It™ EX Rubbing Compound, 1 qt. (946mL), PN 36060
- 3M™ Perfect-It™ Foam Compounding Pad, Double Sided, Quick Connect, 9 in., PN 05706
- 3M™ Perfect-It™ Low Linting 100% Wool Compound Pad, Double Sided, Quick Connect, PN 33279
- 3M™ Quick Connect Adaptor, 5/8 in. Thread, PN 05752
- 3M™ Electric Variable Speed Polisher, PN 28391
- 3M™ Inspection Spray, 1 gallon, PN 06082





PAINT RUNS / PAINT SAGS

7 Machine Polish

Polish the repair area with a high speed polisher set between 1200 to 2000 rpm. Use a black foam polishing pad and the appropriate machine polish. Wipe the panel clean with a yellow microfiber cloth.



Product List

- 3M™ Perfect-It™ Machine Polish, PN06064
- 3M™ Perfect-It™ Foam Polishing Pad, PN05707
- 3M™ Quick Release Adaptor, PN05752
- 3M™ Perfect-It™ Detail Cloth, PN06016





PAINT RUNS / PAINT SAGS

8

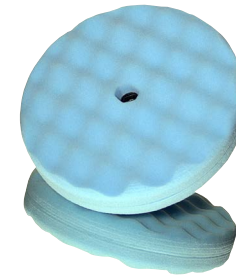
Ultrafine Machine Polish

Polish the repair area with a high speed polisher set between 1200 to 2000 rpm. Use a blue foam polishing pad and ultrafine machine polish. Leave a light film of the polish on the panel and wipe clean with a blue microfiber cloth.



Product List

- 3M™ Perfect-It™ Ultrafine Machine Polish, PN06068
- 3M™ Perfect-It™ Ultrafine Foam Polishing Pad, PN05708
- 3M™ Quick Release Adaptor, PN05752
- 3M™ Perfect-It™ Detail Cloth, PN06020





PAINT RUNS / PAINT SAGS

9

Final Detail

Remove any masking material from the repair area and clean any residual sling from adjacent panels and door jamb areas. Cleaning the panel immediately after compounding and polishing will greatly improve the ease of cleaning. Inspect the surface using the 3M™ PPS™ SUN GUN™ II.



Product List

- 3M™ Perfect-It™ Detail Cloth, PN06020
- 3M™ Perfect-It™ Clean and Shine, PN06084
- 3M™ PPS™ SUN GUN™ II Light Kit, PN 16550

